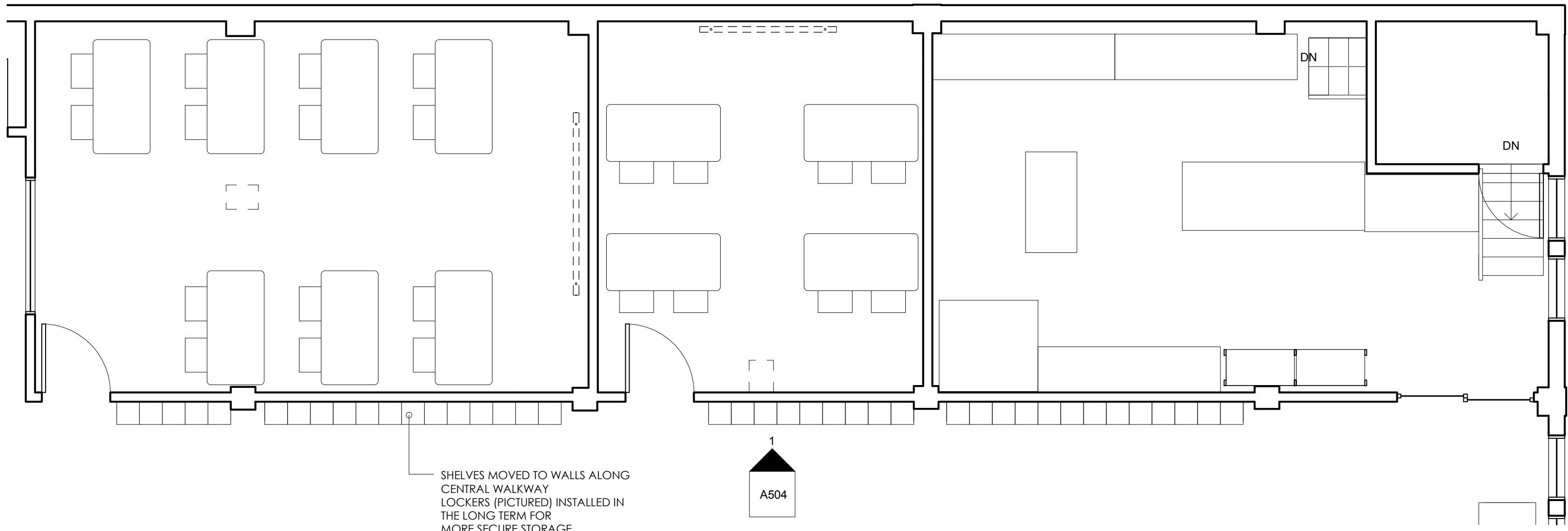
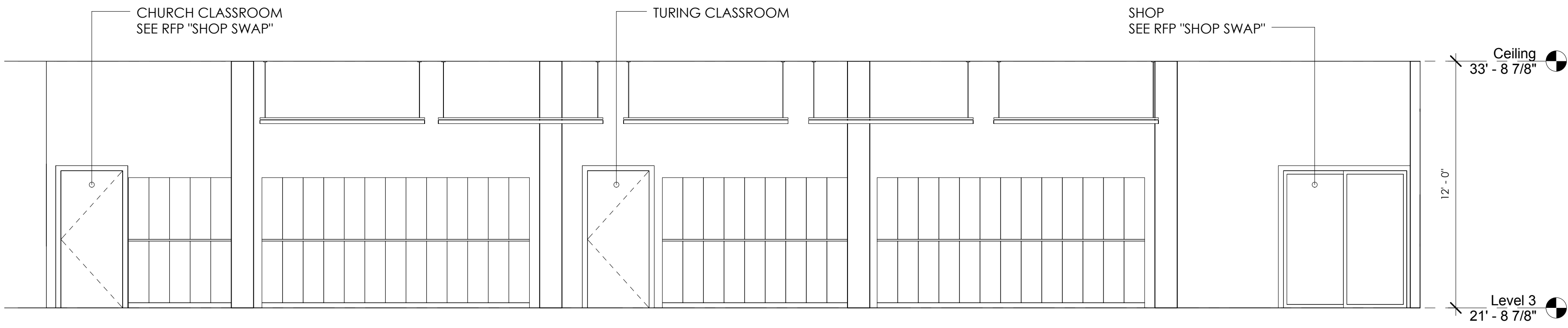


HACKERSHELF HEALTH Existing Plan 1/4" = 1'-0" 3



HACKERSHELF HEALTH Proposed plan 1/4" = 1'-0" 2



HACKERSHELF HEALTH 1/4" = 1'-0" 1

RFP:
HACKERSHELF HEALTH

RFP DATA
==== Project Name ====
Hackersshelf Health
==== Proposer ====
Danny (perhaps others) via Wiki, Initial RFP documentation by Jarrod Hicks
==== Summary ====
Phase 1: Clear abandoned projects and materials from Hackersshelves AKA Member Shelves
Phase 2: Move Hackersshelves to central location in space. Possibly replace shelves with lockers (pictured)
==== What Will Be Done ====
Abandoned projects and materials will be discarded from, or donated to, Noisebridge. The details of this process are TBD. The discards will be physically removed from Noisebridge as E-waste or during the CLEAN MACHINE. During or Soon after, the shelves and their functions will be moved to a visible central location along the wall north of the existing library, cafe, and kitchen. They will be connected to the walls for additional safety. If the locker option is chosen, the lockers can be installed, and belongings moved. When the shelves are cleared the can be reused elsewhere or dismantled. This may be a long term option.
==== What Areas in the Space Will This Affect ====
Hackitorium wall north of the existing library, cafe, and kitchen.
==== Who Will Be Doing It ====
People using and, knowledgeable about, the contents of the hackersshelves. Anyone willing to help with moving and installing the shelves.
==== Why This Will Be Good ====
The shelves have become unusable to people with new projects and equipment to bring into the space for projects. The shelves are hidden from view making it difficult to notice when they are being stolen from. A lockable storage unit may be a good long term solution.
==== Why This Will Be Bad ====
The Hackersshelves will get cluttered again and may contribute a significant visual clutter to the space, but this may be offset by neat in-progress projects sitting on them that everyone can see. Lockers are expensive. It may not be possible to achieve consensus on how lockers can be used and maintained in an excellent manner
==== How Long Will It Take ====
No idea how long the cleanup will take. The space wouldn't need to close but a large amount of rubbish may be generated. If this is combined with other cleanup proposals the amount of garbage in the space may make hacking difficult. Moving the shelves can be done over time but the location they are to be put in needs to be cleaned as well.
==== In A Fantastic World, What Extra Budget Would You Like ====
Possibly a rented dumpster for trash.
Hardware and fasteners to attach the shelves to the walls would be useful.
Money for lockers. Used options come up on Craigslist often, it seems.
==== Are There Any Other RFPs This Would Work Well With ====
CLEAN MACHINE
QUIET DIET
Any RFP that will generate large volumes of waste, beyond what can be handled by the street cans.
==== Are There Any Other RFPs This Would Contradict ====
Unknown

Hackersshelf Health
Date 6/19/2013 8:20:41 PM
Scale 1/4" = 1'-0"
Drawn Author
File
Sheet
A504
of Sheets